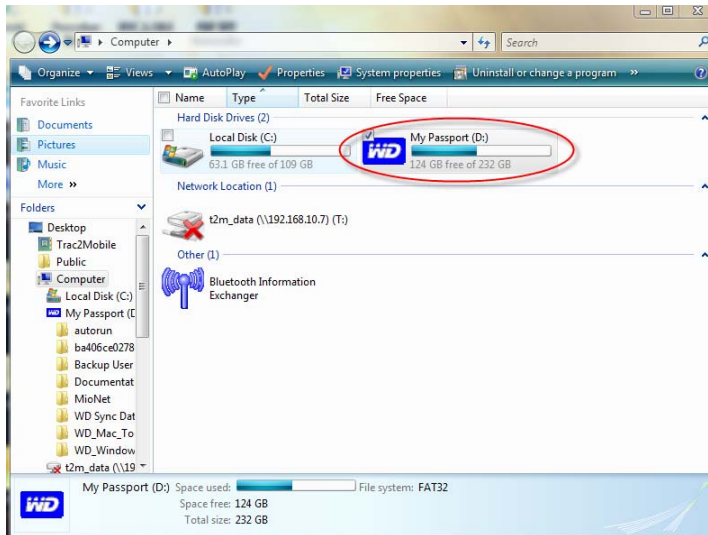


How to Backup Using WD Sync

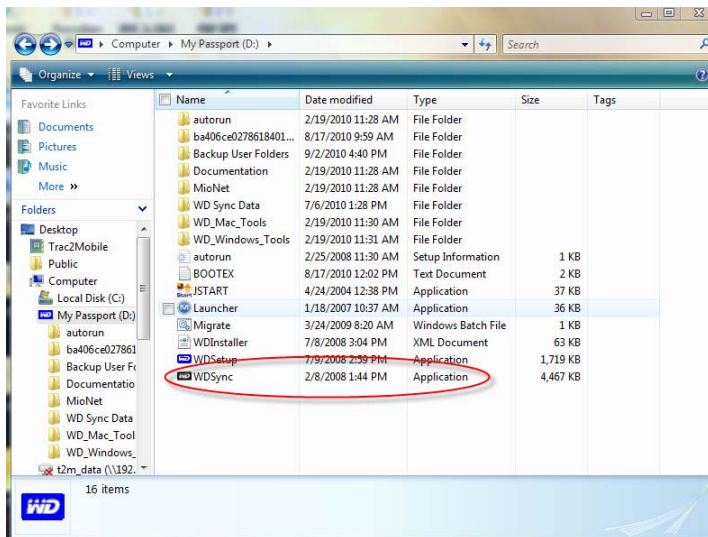
1. Plug in external WD drive



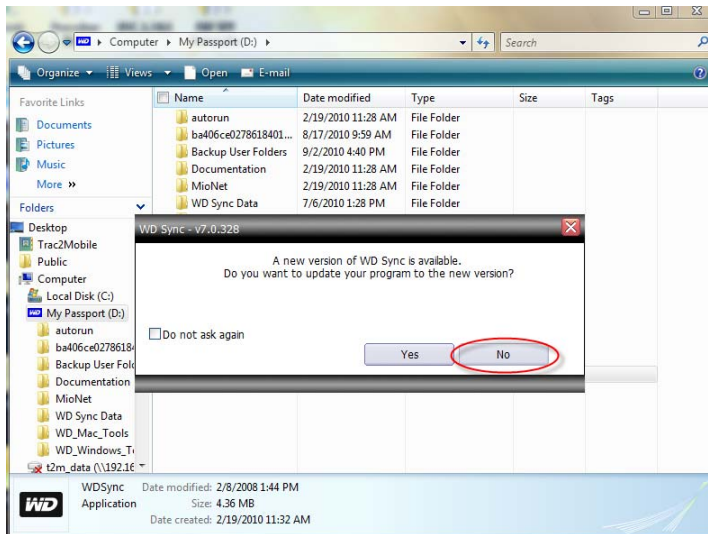
2. Double click on "Computer" from desktop and double click "My Passport"



3. Double click on "WD Sync"



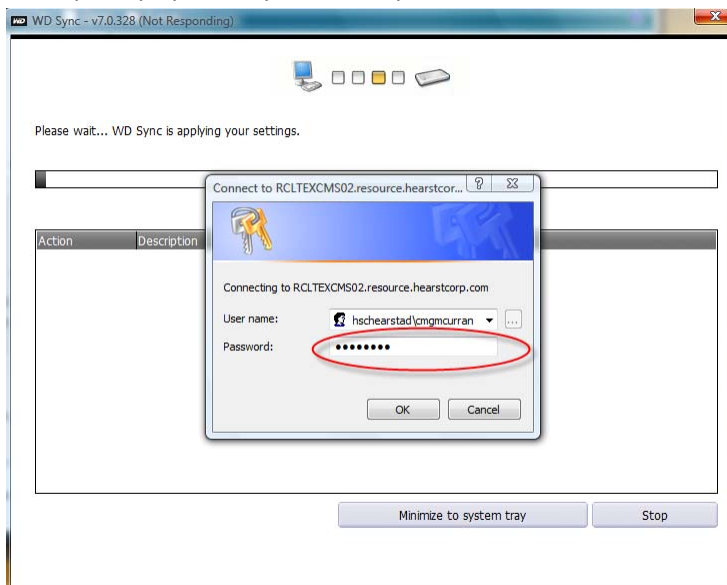
4. Click "No" for the update



5. Enter your password (most likely your rdmp password)



6. It will prompt you for your email password



7. When you see this screen the sync is complete and you can hit "Close"

